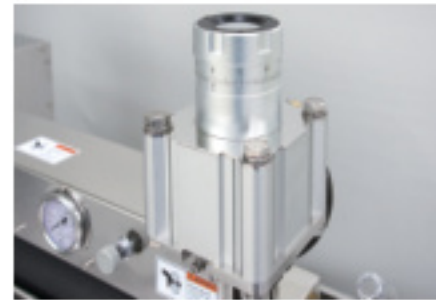


# Gravure Coater

Gravure coater

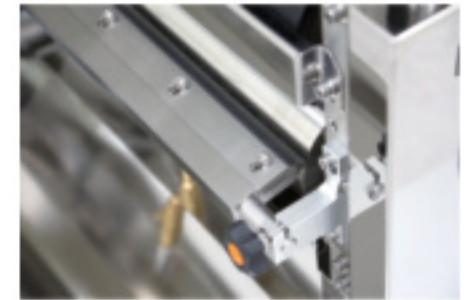


DL-2500GV



## Piston cylinder

Fine pressure control is possible using a piston-style air cylinder. Furthermore, the pressure delivered to the entire roller can be uniformly controlled, and the piston gap can be adjusted.



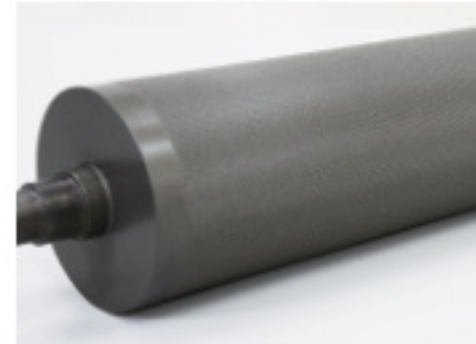
## Doctor blade device

The Doctor Blade is a device whose entire surface is polished to ensure even pressure is applied to the gravure roll, and which pushes out excess coating agent, leaving only the necessary coating agent. (Removable)

## Feature

- Two precise air cylinder gives an equal pressure of left & center & right position by means of precise air controller.
- Variety one side coating processing. (Water base material, Lacquers, Adhesive primers, etc)
- The mesh number is possible from 10# mesh to 200# mesh. (Per 1 inch)
- It is able to select the depth from 800 $\mu$ m~30 $\mu$ m. (0.8mm~0.03mm)
- Basic mesh shape is diamond. But shape can be customized according to test method. (Option)
- Gravure roller material is teflon plating and excellent for anti corrosion & wearing.
- Doctor blade is alloy steel and maintains a tension.
- As adjustable the gap of top & bottom roller, thick material (Non woven) can be used. (Max. 10mm)
- It is possible for 2 roller vertical padder after replacement engraved roller. (Option)
- For user safety, it equips and emergency stop switch & bar.

## ACCESSORIES



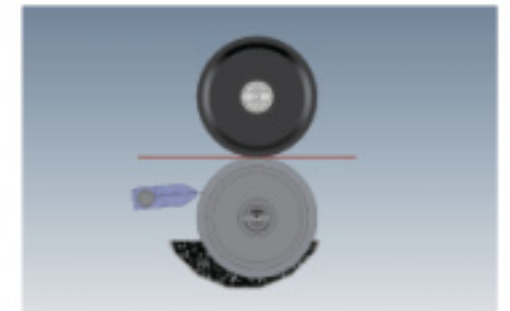
Gravure Roller



Gravure Roller Pattern



Coating bath



Doctor blade

## Specification

Model	DL-2500GV
Type	Vertical
Roller size	Ø110 x 500mm
Working width	450mm
Roller material	Rubber(15mm) - Top Teflon plating - Bottom
Doctor blade size	510 x 20 x 0.2mm
Air cylinder pressure	0~7kgf/cm <sup>2</sup>
Air cylinder	Piston type
Motor	400W
Power source	220VAC 50/60Hz single phase, 500W
Weight (Approx.)	160kg (±5kg)
Dimension (Approx.)	1080(W) x 670(D) x 820(H)mm